



## SHORT/MEDIUM TERM ACCOMMODATION | GEEBUNG



### About

Nice homely and private feel,  
Great location, Close to  
transport links with easy  
access to Brisbane City. In a  
prime spot to adventure  
around Brisbane.



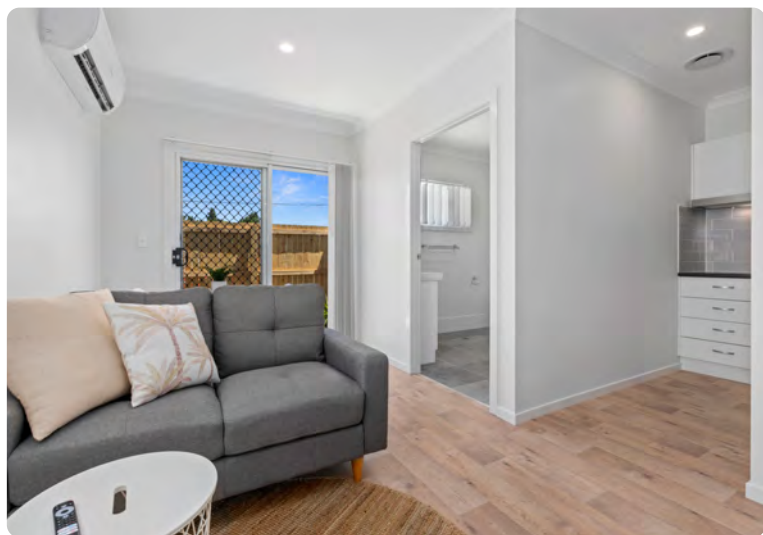
### Disability Support

Accord Care offers around the  
clock support from our highly  
trained and wonderful staff



## Ideal Applicants

This home is ideal for participants who have STA/MTA funding.



## Availability

Enquire now.

## Nearby Features

- Public Transport to the CBD and nearby suburbs
- Close to Westfield shopping centre.

## Property Features

- 5 furnished self-contained units equipped with a bathroom and kitchen and living room.
- Common area laundry and living space.
- Large outdoor area.

Not sure about your funding? Reach out to our friendly intake team, we are happy to help!